

Software RIP combining usability and high performance

RasterLink6

*Bundled Item

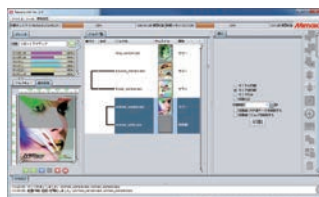
Intuitive and user-friendly operation



1 Basic setting items are indicated by icons, enabling intended operations to be performed intuitively without hesitation.



2 When clicking on the targeted icon, the screen will be changed in the same window. In addition, layout settings can be re-used at any time by implementing "Register as Favorite".



3 When printing, you can visually confirm the job progress on the main screen.

Supports Web update function.

Supports the Web update function that has been well-received in RasterLinkPro5. Program update and profile download can be easily performed via internet.

Specifications

Item	JFX500-2131
Head	On-demand Piezo head (6 printheads with 3 staggered configuration)
Print resolution	300 dpi, 600 dpi, 900 dpi, 1,200 dpi
Ink	UV curable ink
	LUS-150 (C, M, Y, K, W)
	LUS-200 (C, M, Y, K, W)
	LH-100 (C, M, Y, K, W, CL)
Supply system	Supplied by 2L Ink Station
	Ink circulation (*1)
	White ink circulation by MCT (Mimaki Circulation Technology)
Ink degassing module	Equipped with MDM (Mimaki Degassing Module)
Maximum print size (W X D)	2,100 X 3,100 mm (82.7 X 122.0")
Media	Size (W X D)
	2,100 X 3,100 mm (82.7 X 122.0")
	Height
Weight	Max. 50 mm (2.0")
	Less than 50 kg (110.2 lbs.) / m ²
Media table	Air suction by vacuum
	Vacuum area
Print accuracy	Absolute accuracy
	± 0.3 mm (0.01") or ± 0.3% from specified print distance
Repeatability	± 0.2 mm (0.01") or ± 0.1% from specified print distance
UV unit	Equipped with UV LED (Light Emitting Diodes)
	Lifetime (*2)
Interface	USB2.0
	Applicable standard
Power specifications	VCCI class A, CE Marking, CB Report, UL, RoHS Directive
	AC 200 – 240 V, 50/60 Hz
Power consumption	Less than 2.4 kVA
Operational environment	Temperature
	15 – 30 °C (59 – 86 °F)
	Humidity
	35 – 65 %Rh
	Temperature accuracy
Dust	18 – 25 °C (64.4 – 77 °F)
	Temperature gradient
	Less than ± 10 °C/h (18 °F)
Dimensions (W X D X H) (*3)	Equivalent to normal office level
	4,100 X 4,462 X 1,490 mm (161.4 X 175.7 X 58.7")
Weight (*3)	1,353 kg (2,982.8 lbs.)

*1 MCT works only with white ink.

*2 Reference value. There is no guarantee as to the lifetime.

*3 Ink Station is not included in the dimensions and the weight.

*4 RasterLink6 and the standard vacuum unit are bundled with the JFX500-2131.

●All trademarks or registered trademarks are the property of their respective owners.●Specifications are subject to change without notice. ●Some of the screens and printing samples in this catalog are artificial renderings. ●Inkjet printers print using extremely fine dots, thus colors may vary slightly following replacement of the printing heads. Also note that if using multiple printer units, colors may vary slightly among the units due to slight individual differences among the units.

●Some of the samples in this catalogue are artificial renderings. ●Specifications, design and dimensions stated in this catalogue may be subject to change without notice (for technical improvements, etc.). ●The corporate names and merchandise names written on this catalogue are the trademark or registered trademark of the respective corporations. ●Inkjet printers print using extremely fine dots, so colors may vary slightly after replacement of the printing heads. Also note that if using multiple printer units, colors could vary slightly from one unit to other unit due to slight individual differences.

Mimaki MIMAKI ENGINEERING CO., LTD.
2182-3 Shigeno-otsu, Tomi-city, Nagano 389-0512, Japan
www.mimaki.co.jp Tel: +81-268-78-2288 trading@mimaki.jp

Mimaki Global Network

USA	MIMAKI USA, INC.	Europe	MIMAKI EUROPE B.V.
Brazil	MIMAKI BRASIL COMERCIO E IMPORTACAO LTDA	Indonesia	PT. MIMAKI INDONESIA
India	MIMAKI INDIA PRIVATE LIMITED	Australia	MIMAKI AUSTRALIA PTY. LTD.
Taiwan	MIMAKI ENGINEERING (TAIWAN) CO.,LTD.	China	SHANGHAI MIMAKI TRADING CO.,LTD.
Singapore	MIMAKI SINGAPORE PTE. LTD.		

RasterLink6 features a wide range of innovative functions while improving ease of use. Anyone can use this RIP software and obtain beautiful print results without difficulty.

Supplies

Item	Color	Item No.	Remarks
LH-100	Cyan	LH100-C-BA	1L bottle
	Magenta	LH100-M-BA	
	Yellow	LH100-Y-BA	
	Black	LH100-K-BA	
	White	LH100-W-BA	
LUS-150	Clear	LH100-CL-BA	1L bottle
	Cyan	LUS15-C-BA	
	Magenta	LUS15-M-BA	
	Yellow	LUS15-Y-BA	
	Black	LUS15-K-BA	
LUS-200	White	LUS15-W-BA	1L bottle
	Cyan	LUS20-C-BA	
	Magenta	LUS20-M-BA	
	Yellow	LUS20-Y-BA	
	Black	LUS20-K-BA	
Primer	White	LUS20-W-BA	1L bottle
	PR-100	PR100-Z-BA	
Tungsten replacement needle for ionizer	PR-200	PR200-Z-BA	4 pcs
Air filter kit		SPA-0208	10 pcs
		SPA-0209	
Ink bottle 2L BK		SPA-0210	1 empty bottle

- Clear ink (LH-100) and Primers (PR-100/PR-200) are compatible with LH-100 and LUS-150 inks.
- LUS-200 ink is not compatible with Clear ink (LH-100) and Primers (PR-100/PR-200).
- Each ink and primer is provided in an ink bottle (1L), please fill the ink into a bottle (2L) installed in an ink station.
- Ink flexibility of LUS-150/200 may vary depending on materials, please test on actual materials in advance.
- JFX500-2130 may not take full advantage of its print speed with LH-100.

Option

Item	Item No.	Remarks
Vacuum unit (3 φ . 200)	OPT-J0216	3-phase : 200 . 240 V, 30 A, 3.4 kW
Vacuum unit (1 φ . 200)	OPT-J0217	1-phase : 200 . 240 V, 30 A, 1.9 kW
Vacuum unit (3 φ . 400)	OPT-J0232	3-phase : 380 . 480 V, 20 A, 3.4 kW
Ionizer kit	OPT-J0322	For electrostatic removal
Option blower connection KIT	OPT-J0330	
PR100/200KIT FOR JFX500	OPT-J0392	Kit for using PR-100/200 primer

• Additional power source is required in order to use the vacuum unit.

• Each vacuum unit requires "Option blower connection KIT (OPT-J0330)" in order to connect to the JFX500-2131.

Inks and substrates:

- Please note that properties and adhesion, weather resistance etc. of ink and substrates can vary. Therefore please test materials before printing.
- Some substrates require primer before printing. Please test materials beforehand or ask your sales representative.

Safety notice:

You are dealing with UV light sources that may harm your health. Please follow below guidelines strictly:

- Do not look directly into the UV light source nor place your hand, or expose your skin directly to the UV light source.
- Depending upon print mode, there might occur some VOC emittance from printed parts not yet cured and hardened
- In addition, please read the instructions and guidelines of the manual carefully and follow those.

Large Format UV LED Flatbed Inkjet Printer

JFX500-2131

Mimaki
Product Brochure

Powerful combination of
Speed and Quality

MAX
60m²/h



Mimaki
Green Technology

JFX500-2131





Max Speed 60m²/h

For amazing speed, the JFX500-2131 is equipped with Mimaki's latest print head and UV LED technology. Mimaki's exclusive head control technology delivers an amazing high print quality. This combination of "Speed" and "High quality" are essential for large format printers. Both of them indeed come true in the newly released JFX500-2131!

High Quality Print

IMS for highly detailed and accurate prints

2 units of Mimaki's unique highly-accurate linear scales controlled by IMS have been equipped, for fine step accuracy and dot placement. This results in far less banding artifacts and even the possibility to print legible 2 pt characters.

* Characters may be illegible depending on the media.
(IMS = Intelligent Microstepping System)



MAPS2 - A mask pattern that reduces UV curing banding

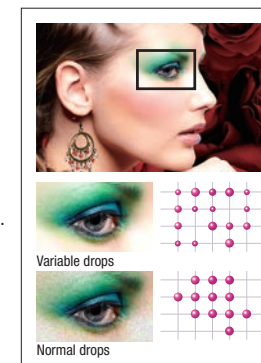
In addition to the normal pattern, you can select "MAPS2" that effectively reduces bandings. MAPS2 implements printing with generating passes, using a gradational mask pattern, the UV curing is performed more gradually and it diminishes the appearance of bandings.

(MAPS2 = Mimaki Advanced Pass System)



Smooth and beautiful gradation achieved by Mimaki's unique head control technique

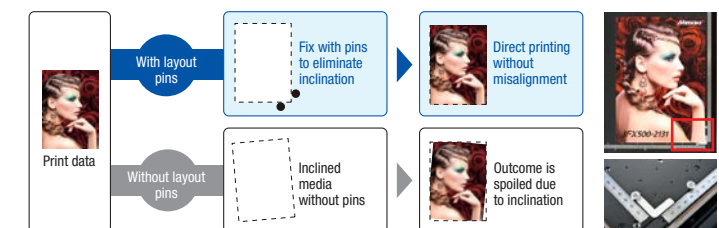
Variable drops function provides 3 different drop sizes at once. The minimum size is amazingly 7 pico-liter drop and produces smooth and natural gradation, without granular appearance even in the 4-color mode.



Easy Operations

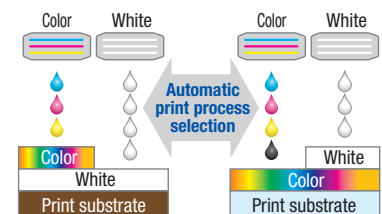
Layout pins that eliminate annoying aligning works

When placing a substrate on a flatbed, strict alignment had been required to check whether the media is not in-line with the printing surface, or whether the point of origin is aligned, etc. This machine is equipped with pins and a scale to eliminate such annoying aligning work. You fix the substrate to the pins and check the placement with the scale at first and then edit the design data or printer settings accordingly. In this way, you can implement direct UV printing without misalignment.



Reverse Print Function

Select the order of over- and under-print with white in RasterLink6, the bundled standard software RIP. The most efficient path is then determined by the software. Operators experience efficient high productivity gains without further operator intervention.

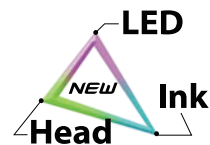


Offering vacuum unit as standard equipment

JFX500-2131 comes equipped with a vacuum unit to securely fix the substrates on the flatbed. It is also useful for preventing warpage of substrates during printing. The vacuum area is vertically divided into 4 zones and can be separately activated according to the substrates.

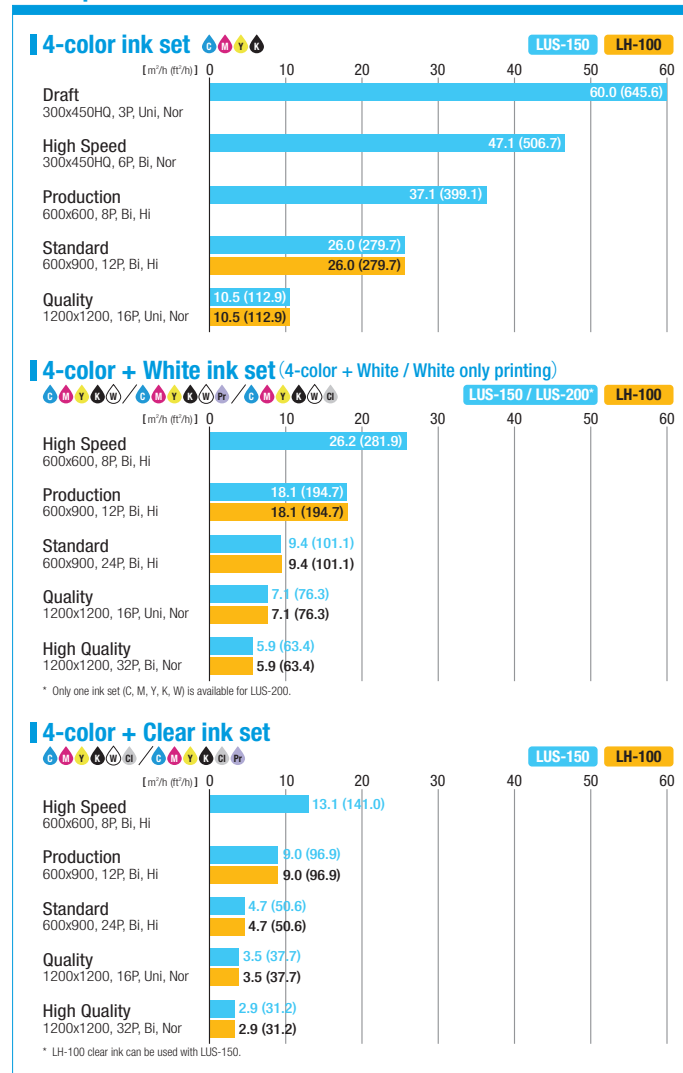


High Speed Print



Maximum printing speed of 60m²/h

Print Speed



Various ink selections

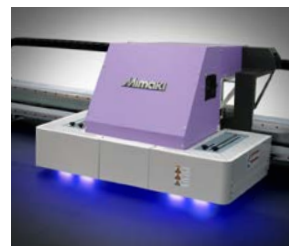
The JFX500-2131 is compatible with various UV ink types that have different characteristics. The optimum ink can be selected for intended applications.

Flexible UV Ink		Hard UV Ink
LUS-200	LUS-150	LH-100
A flexible UV ink has 200% stretchability. One of ideal applications is a vehicle wrapping that requires excellent flexibility to apply print films.	A flexible UV ink has 150% stretchability and would not crack during post print processes. This ink is compatible with a wide range of materials and has a low degree of tackiness.	A hard UV ink has a high scratch/chemical resistance and an accurate color reproducibility. This ink is suitable for rigid materials.

* Ink flexibility of LUS-150/200 may vary depending on materials, please test on actual materials in advance.

Newly developed UV LED unit

The New UV LED unit is optimized and the curing efficiency of LED is improved enough to cure the ink. High speed UV printing is available with all the advantages of LED technology, such as long-life, energy savings, and lower heat generation (being able to print on a media which is easily deformed or discolored by heat).

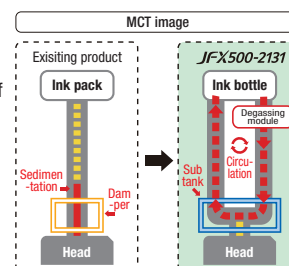


Easy Maintenance

Ink circulation, ecology & economy with the application of white ink

MCT to regularly circulate white ink is standard equipment. It enables stable output from the time of machine startup by effectively avoiding the settling of white pigment in the ink lines. Additionally, MCT contributes to reduction of ink waste, thereby supporting environmentally and economically friendly applications.

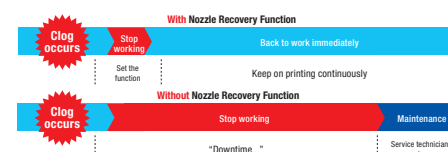
* MCT works only with white ink.
(MCT = Mimaki Circulation Technology)



Nozzle Recovery Function

Without the nozzle recovery function, when printing and nozzle clogging or failure occurs that could not be resolved by the nozzle cleaning function, printers have to wait stop until the Mimaki service team arrives. When it comes to this function, even if nozzle washing has no effect on a troubled nozzle, the print image quality can be retained immediately without slowing down the print process.

* The recoverability of this function is limited.
* When MAPS2 is activated, the nozzle recovery function is disabled.



Eco-Friendliness

Highly refined environmentally friendly functions

UV curing printing is an ecological printing method that hardly generates VOCs. Curing efficiency of the newly developed UV LED unit has been improved compared to that of the conventional one. It is powerful and reduces power consumption while offering much longer life cycles and increased operability. Each UV ink is supplied in high-capacity bottle. This economical and ecological package contributes to reduce amount of industrial waste and running cost.

