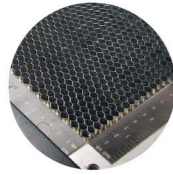


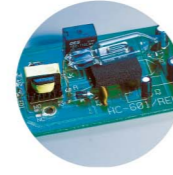
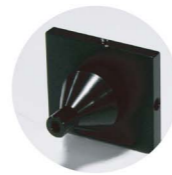
Optional Items

Aluminum Grid /
Honeycomb Table

Air Compressor Unit



Fume Extraction System

SmartGUARD™ Fire
Alarm (Patented)

SmartAIR Nozzle



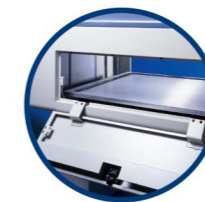
Rotary Attachment

Specification	Mercury III	
Work Area	25 x 18 in. (635 x 458 mm)	
Max. Part Size (W x L x H)	All doors closed	27 x 19 x 6.5 in. (685 x 482 x 165 mm)
	All doors open	27 x ∞ x 6.5 in. (685 x ∞ x 165 mm)
Table Size	31.1 x 20.9 in. (790 x 530 mm)	
Dimensions (W x D x H)	44.3 x 28.3 x 39.6 in. (1125 x 720 x 1005 mm)	
Laser Source	12, 25, 30, 40, 60W	
Cooling	Air-cooled, Operating environment temperature 15°- 30°C (60°- 86°F)	
Drive	Closed-loop DC Servo Control	
Throughput*	166.3 in ² / hr (1072.8 cm ² / hr)	
Speed Control	Adjustable from 0.1~100% of 42 IPS (Up to 16 color-linked speed settings per job)	
Power Control	Adjustable from 1~100% (Up to 16 color-linked power settings per job)	
Engraving Capability	256-level gray scale image processing capability	
Distance Accuracy	0.254 mm or 0.1% of move, whichever is greater	
Z-Axis Movement	Automatic	
Focus Lens	Standard 2.0", optional 1.5", 2.5", & 4.0" available	
Resolution (DPI)	Available 125, 250, 300, 380, 500, 600, 760, 1000, 1500	
Computer Interface	Full speed 2.0 USB Port	
Compatible Operating Systems	MS Windows	
Display Panel	4-line LCD panel showing current file name, total working time, laser power, engraving speed, file(s) loaded into memory buffer, setup and diagnostic menus	
Safety	Class I Laser Product Compliant with EN60825, Class II Laser Product Compliant with CDRH 2006/42/EC Machinery Directive Compliance	
Auto Focus	✓	
Red Dot Pointer	✓	
Pass Through Doors	✓	
3D and Stamp Mode	✓	
Operation Voltage	100-240VAC, 50-60Hz Auto Switching, Max. 15A	
Fume Extraction System	External exhaust system is required, 4-inch connection port on the back of machine.	

* Speed does not equal to throughput. See dealer or visit www.GCCworld.com for more details.
 Δ Specifications are subject to change without prior notice.

GCC LaserPro Mercury III

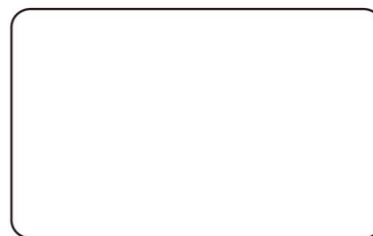
The Ultimate Workhorse with a Proven Track Record



Mercury III

- 25" x 18" (635 x 458 mm) working area
- Popular all around laser engraver with stable and satisfactory performance
- Intuitive control panel allows easy operations
- Easy maintenance motion system
- Emergency button and key-switch add an extra layer of safety
- Pass-through front and rear doors to accommodate oversized working pieces
- Feature-rich windows driver
- Power by USA Made Synrad laser

Authorized Dealer


www.GCCworld.com
